

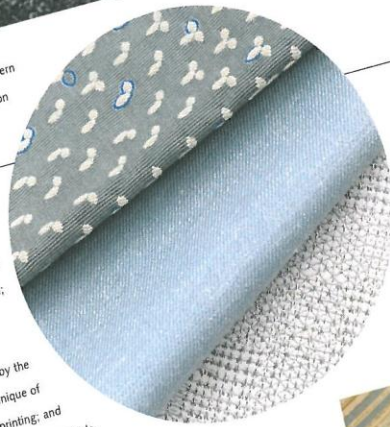


Bruno from **Calvin Fabrics** is a heavy-duty texture woven of cotton, wool and linen. It features a tightly loomed construction and is piece-dyed, creating a multi-tonal effect as the dyes react to the individual yarns. Several finishing processes have been employed to soften the textural surface, giving it a soft, durable hand suitable for contract upholstery. Bruno is available in nine colors.

# Textiles



GreenScreen Revive from **Draper** is a Cradle-to-Cradle-certified Silver window shade fabric that reduces heat and glare while offering a remarkably clean view through to the outdoors. This PVC-free fabric is constructed of 100 percent polyester yarn, with a minimum of 89 percent Repreve<sup>®</sup> polyester. It is also GREENGUARD Children & Schools certified. GreenScreen Revive is available in 1 percent and 5 percent openness, and is offered in eight colors.



Japanese patterns meet modern design in the Insho Collection of upholstery fabrics from **KnollTextiles**. Insho

includes Shima, a 100 percent cotton fabric inspired by a traditional Japanese petal-motif pattern; Katazome, a 67 percent cotton fabric inspired by the Japanese technique of wood block printing; and Haiku, a solid coordinate made of 76 percent wool that is suitable for heavy duty use. Each member of the Insho Collection is GREENGUARD certified.

**Momentum Textiles'** In Motion collection features three Crypton Green fabrics inspired by the precision and fluid spontaneity of contemporary dance. The collection offers both sleek and soft modern looks suitable for a variety of contract interiors, with each pattern available in seven colorways. All In Motion fabrics are made with over 70 percent Repreve<sup>®</sup> post-consumer recycled polyester and exceed 50,000 double rubs. They also feature the stain-, moisture- and bacteria-resistant characteristics of Crypton Green.

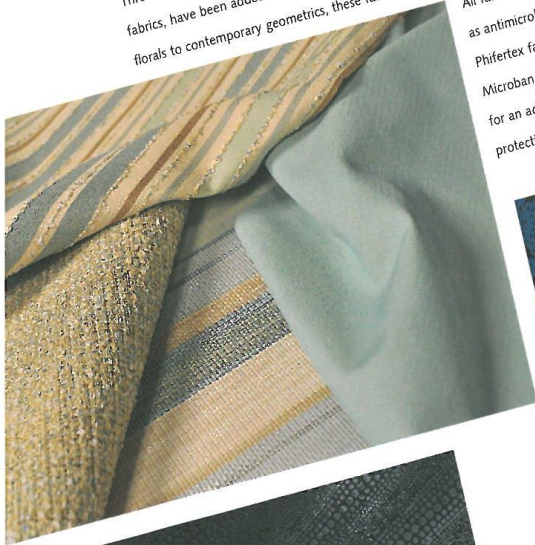




The Remède collection, created in a collaboration between **Architex** and HDR Architecture, embarks on a mission to create a visual oasis within healthcare environments. The collection focuses on creating patterns in a range of color palettes to provide unlimited opportunities in creating spaces for reflection as well as celebration. Made of solution-dyed nylon with Nano-Tex and Durablock protection, the Remède collection is extremely durable and cleanable, providing peace of mind in even the harshest settings.

Three dozen new fabrics, including 15 Phifertex outdoor fabrics and 21 GeoBella cushion fabrics, have been added to the Designed Fabrics collection from **Phifer**. From stripes to solids, florals to contemporary geometrics, these fabrics present a range of options to suit any décor.

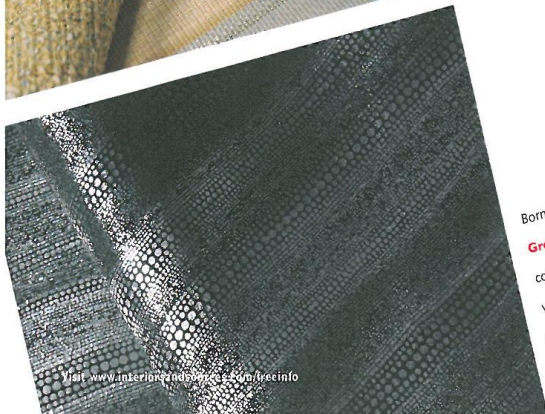
All fabrics are highly durable as well as antimicrobial and stain resistant; Phifertex fabrics are infused with Microban antimicrobial protection for an additional level of cleanliness protection.



As a hand-drawn expression of a Swedish crochet design, Stencil by **HBF Textiles** is a contemporary scaled pattern set up in a half drop pattern repeat. This placement allows more of the circular motifs to appear on the back and seat of a smaller-scaled chair. Comprised of a solution-dyed nylon warp and 80 percent post-consumer recycled polyester, Stencil is 100 percent bleach cleanable and comes standard with a MBDC-certified Silver GreenShield stain-resistant finish.



Born in the Verde Valley region of Italy and inspired by the latest fashion trends, Hypnotic from **Green Hides** is a velvety suede leather fused with a very metallic application. This unique effect combines classic tradition with exoticism through the special lizard skin pattern. Available in a variety of metallic applications from silver, gold, bronze to platinum, Hypnotic provides a modern and refined sophistication ideal for hospitality and other contract applications.



Visit [www.interiorsources.com/freeinfo](http://www.interiorsources.com/freeinfo)